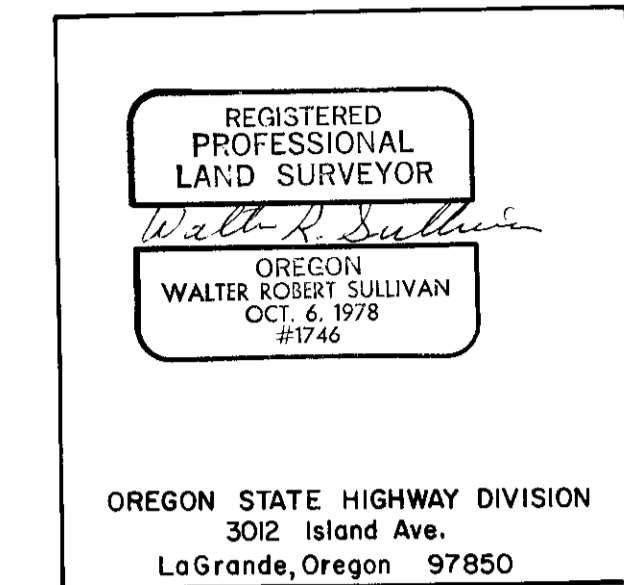


INDEX OF SHEETS	
SHEET No.	DESCRIPTION
1	Title Sheet
2-8	Drawing Sheets

STATE OF OREGON
DEPARTMENT OF TRANSPORTATION
STATE HIGHWAY DIVISION

N.C.L. STANFIELD - STANFIELD INTCHGE. SEC. UMATILLA - STANFIELD HIGHWAY UMATILLA COUNTY				SHEET No. 1
FED. ROAD Div. No.	STATE	PROJECT NUMBER	FISCAL YEAR	TOTAL SHEETS
10	OREGON			See Index



N.C.L. STANFIELD - STANFIELD INTCHGE. SEC.
UMATILLA - STANFIELD HIGHWAY

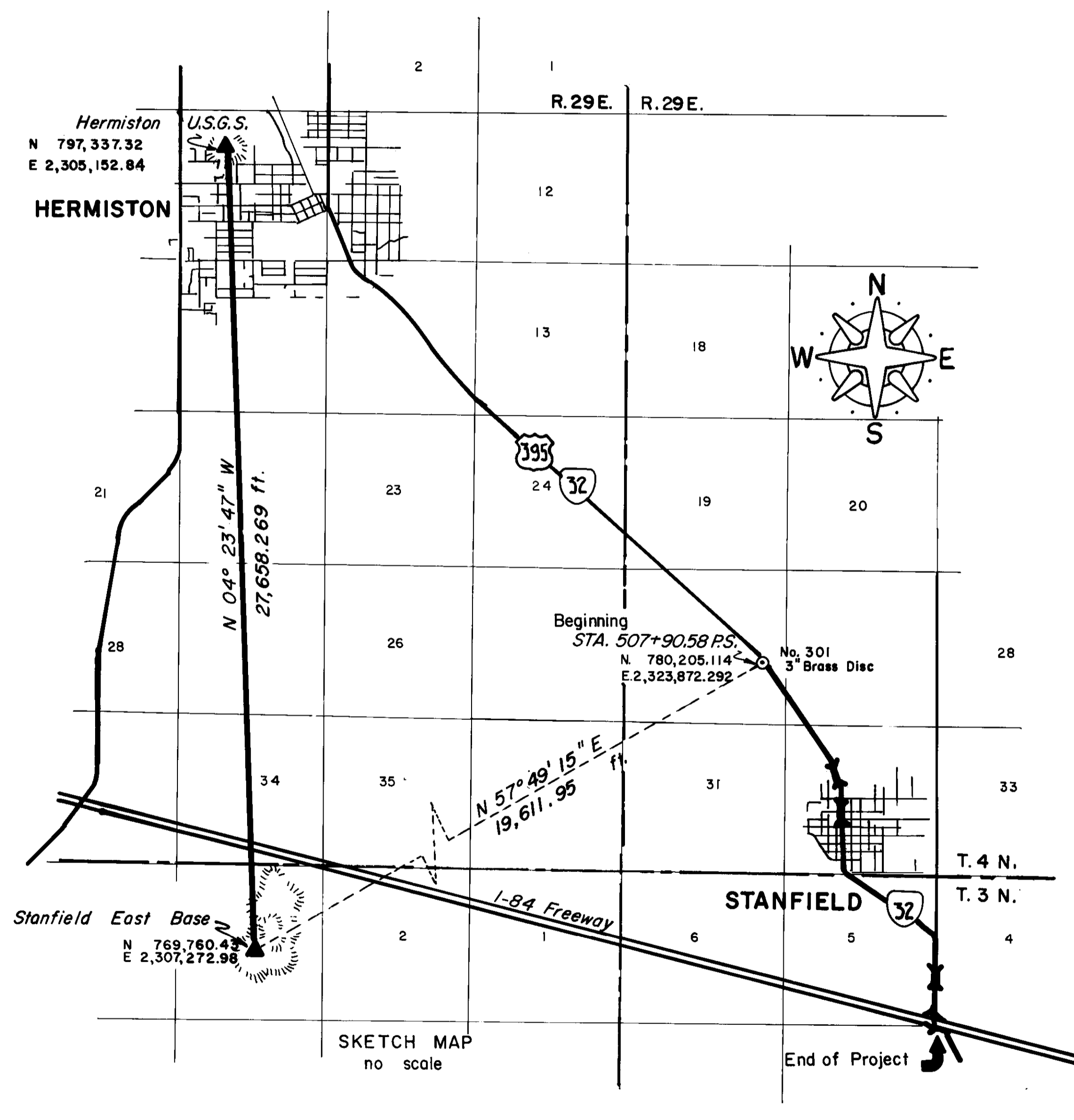
UMATILLA COUNTY

MARCH 1991

- CONSTRUCTED CENTERLINE
- DELINEATOR POST WITH PADDLE MARKED "R/W" (to designate R/W break only - no pin)
 - FOUND PROPERTY PIN 5/8" IRON ROD
 - ⊙ SET 3" BRASS DISC CENTERLINE
 - ▲ FOUND MONUMENTS - AS NOTED

FOR MONUMENTS SET SEE FIELD BOOK
No. 3044 ON FILE TRANSPORTATION BLDG., ROOM 222
SALEM, OREGON 97310

1927 GRID BEARINGS- NORTH ZONE
NOTE: COORDINATES USED ON THIS MAP ARE ON A LOCAL DATUM PLANE WHICH REPRESENTS TRUE GROUND DISTANCES. TO CONVERT LDP COORDINATES TO OREGON STATE GRID NORTH ZONE, MULTIPLY LDP COORDINATES BY 0.9999226.



SURVEY NARRATIVE

The purpose of this survey was to monument centerline "as-constructed" and relate these monuments to called Right-of-Way on the Umatilla-Stanfield Highway in Umatilla County, in and about the City of Stanfield, Oregon. This survey was contained in Township 4 North, Range 29 East, Sections 29, 30 & 32 and Township 3 North, Range 29 East, Sections 4, 5, 8 & 9.

The Basis of Bearing for this survey were the National Geodetic Survey Triangulation stations Stanfield East Base and Hermiston. A control traverse was run through the roadway section and closed on point 04890000 established by the O.S.H.D. Photogrammetry Unit in a 1972 survey to establish control for a Stanfield By-Pass. The closure for this survey was 1:41000. Traverse adjustments were made using "compass rule".

The "Construction" centerline was monumented on curve points and P.O.T.'s the length of the project. The points set were 3" diameter brass caps set in 30 inch long iron pipe or concrete located in 6 inch diameter iron 'monument boxes' set at highway pavement elevation. The brass caps are stamped "OREGON STATE HIGHWAY DIVISION REFERENCE". Monuments were set at construction centerline stationing. The monuments are related to highway Right-of-Way stationing and widths as shown on map 9B-29-7.

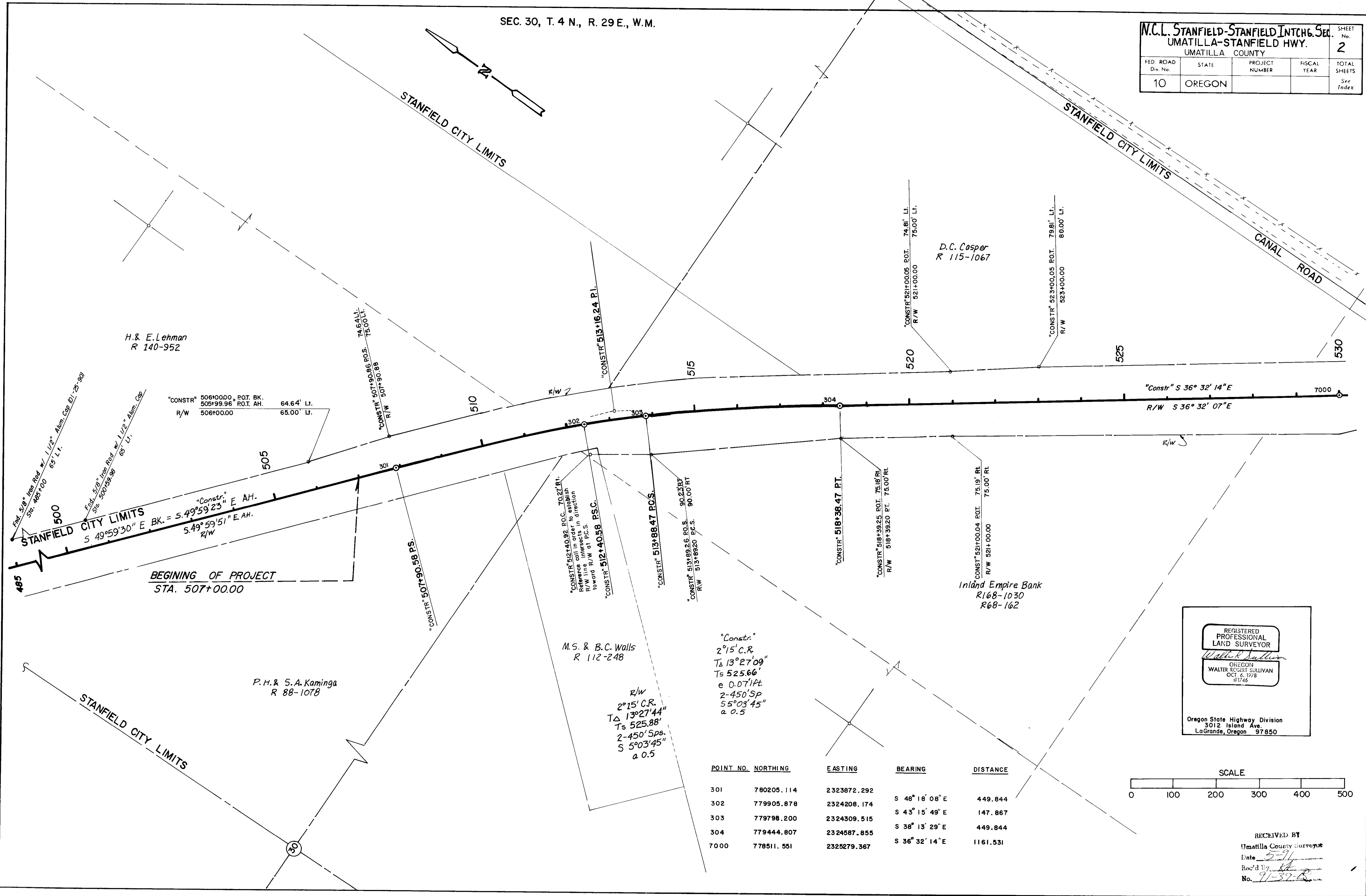
Monuments were set using ties from the control traverse run for this project. Points were occupied and verified. Equipment used was Wild T-16 theodolite with a Wild DI-2000 distomat.

Co-ordinates shown are the Oregon Co-ordinate System of 1927 North Zone and converted to Local Datum Plane co-ordinates using a factor of 0.9999226.

RECEIVED BY
Umatilla County Surveyor
Date 5-91
Rec'd By [Signature]
No. 91-39-B

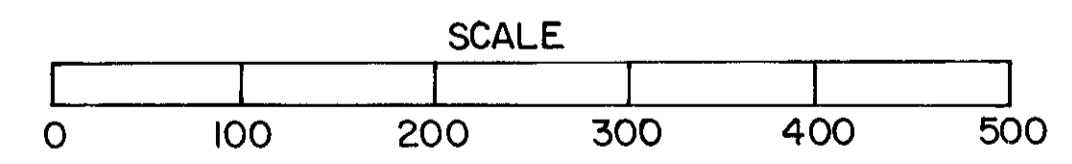
SEC. 30, T. 4 N., R. 29 E., W.M.

N.C.L. STANFIELD-STANFIELD INTCHG. SEC.				SHEET No.
UMATILLA COUNTY				2
FED. ROAD Div. No.	STATE	PROJECT NUMBER	FISCAL YEAR	TOTAL SHEETS
10	OREGON			See Index



POINT NO.	NORTHING	EASTING	BEARING	DISTANCE
301	780205.114	2323872.292		
302	779905.878	2324208.174	S 48° 18' 08" E	449.844
303	779798.200	2324309.515	S 43° 15' 49" E	147.867
304	779444.807	2324587.855	S 38° 13' 29" E	449.844
7000	778511.551	2325279.367	S 36° 32' 14" E	1161.531

REGISTERED PROFESSIONAL LAND SURVEYOR
Walter Robert Sullivan
 OREGON
 WALTER ROBERT SULLIVAN
 OCT. 6, 1978
 21746



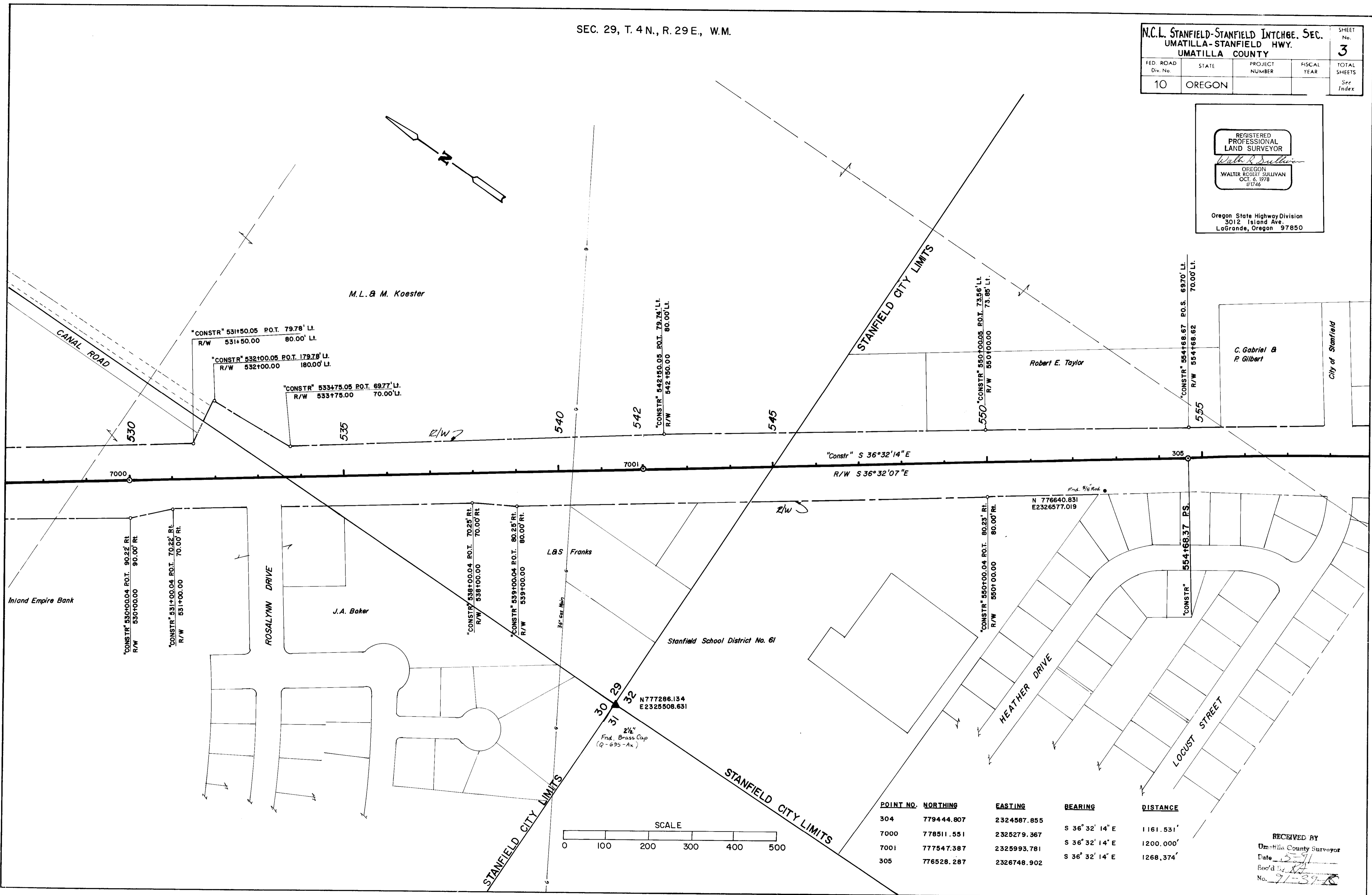
RECEIVED BY
 Umatilla County Surveyor
 Date 5-9-79
 Rec'd By [Signature]
 No. 91-37-R

SEC. 29, T. 4 N., R. 29 E., W.M.

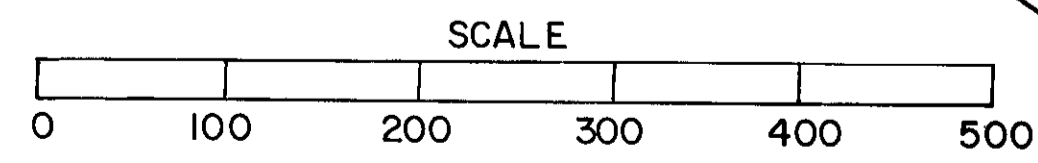
N.C.L. STANFIELD-STANFIELD INTCHGE. SEC. UMATILLA-STANFIELD HWY. UMATILLA COUNTY				SHEET No. 3
FED. ROAD Div. No.	STATE	PROJECT NUMBER	FISCAL YEAR	TOTAL SHEETS
10	OREGON			See Index

REGISTERED PROFESSIONAL LAND SURVEYOR
Walter R. Sullivan
 OREGON
 WALTER ROBERT SULLIVAN
 OCT. 6, 1978
 #1746

Oregon State Highway Division
 3012 Island Ave.
 LaGrande, Oregon 97850



POINT NO.	NORTHING	EASTING	BEARING	DISTANCE
304	779444.807	2324587.855		
7000	778511.551	2325279.367	S 36° 32' 14" E	1161.531'
7001	777547.387	2325993.781	S 36° 32' 14" E	1200.000'
305	776528.287	2326748.902	S 36° 32' 14" E	1268.374'



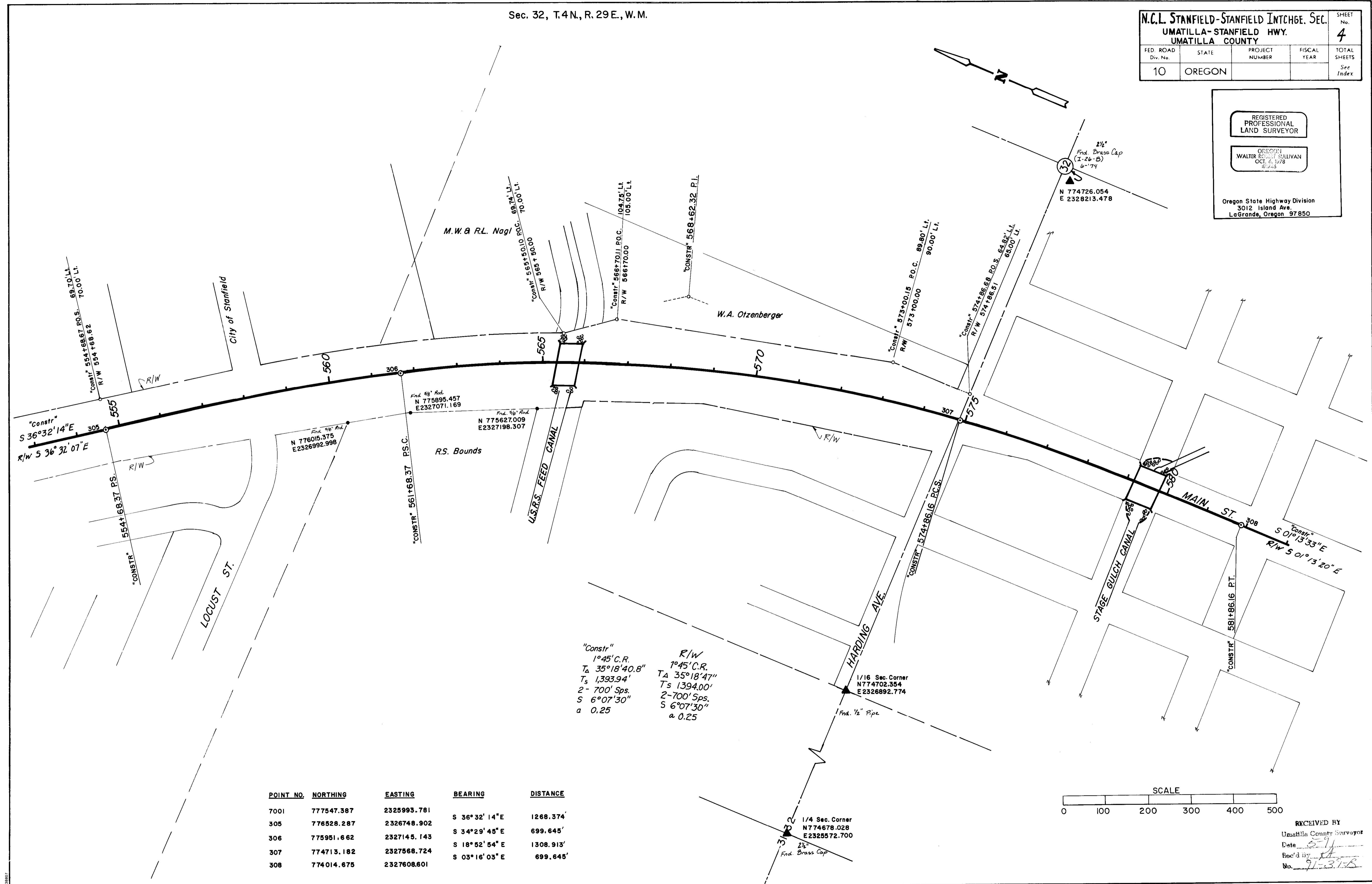
RECEIVED BY
 Umatilla County Surveyor
 Date 5-91
 Rec'd by W
 No. 91-39-R

N.C.L. STANFIELD-STANFIELD INTCHGE. SEC.				SHEET No.
UMATILLA-STANFIELD HWY.				4
UMATILLA COUNTY				
FED. ROAD Div. No.	STATE	PROJECT NUMBER	FISCAL YEAR	TOTAL SHEETS
10	OREGON			See Index

REGISTERED PROFESSIONAL LAND SURVEYOR

OREGON
WALTER ROBERT SULLIVAN
OCT. 6, 1978
#715

Oregon State Highway Division
3012 Island Ave.
LaGrande, Oregon 97850



POINT NO.	NORTHING	EASTING	BEARING	DISTANCE
7001	777547.387	2325993.781		
305	776528.287	2326748.902	S 36°32'14"E	1268.374'
306	775951.662	2327145.143	S 34°29'45"E	699.645'
307	774713.182	2327568.724	S 18°52'54"E	1308.913'
308	774014.675	2327608.601	S 03°16'03"E	699.645'

"Constr"
1°45' C.R.
T_A 35°18'40.8"
T_S 1,393.94'
2-700' Sps.
S 6°07'30"
a 0.25

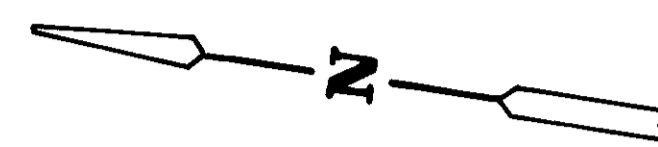
R/W
1°45' C.R.
T_A 35°18'47"
T_S 1394.00'
2-700' Sps.
S 6°07'30"
a 0.25

RECEIVED BY
Umatilla County Surveyor
Date: 8-9
Rec'd by: [Signature]
No. 91-315B

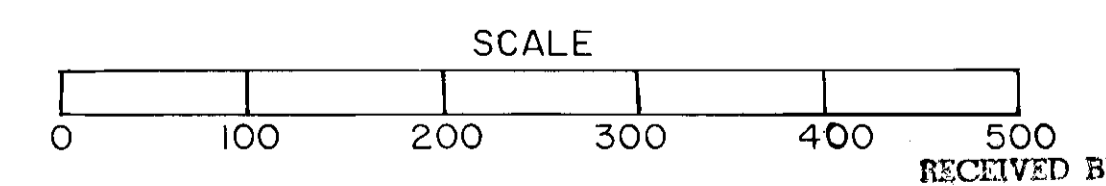
SEC. 32, T. 4 N., R. 29 E., W.M.
 SEC. 5, T. 3 N., R. 29 E., W.M.

N.C.L. STANFIELD-STANFIELD INTERCHGE. SEC.				SHEET No.
UMATILLA-COUNTY HWY.				5
UMATILLA COUNTY				TOTAL SHEETS
FED. ROAD Div. No.	STATE	PROJECT NUMBER	FISCAL YEAR	See Index
10	OREGON			

REGISTERED PROFESSIONAL LAND SURVEYOR
Walter R. Sullivan
 OREGON
 WALTER ROBERT SULLIVAN
 C-1, 6, 1978
 #1746
 Oregon State Highway Division
 3012 Island Ave.
 LaGrande, Oregon 97850



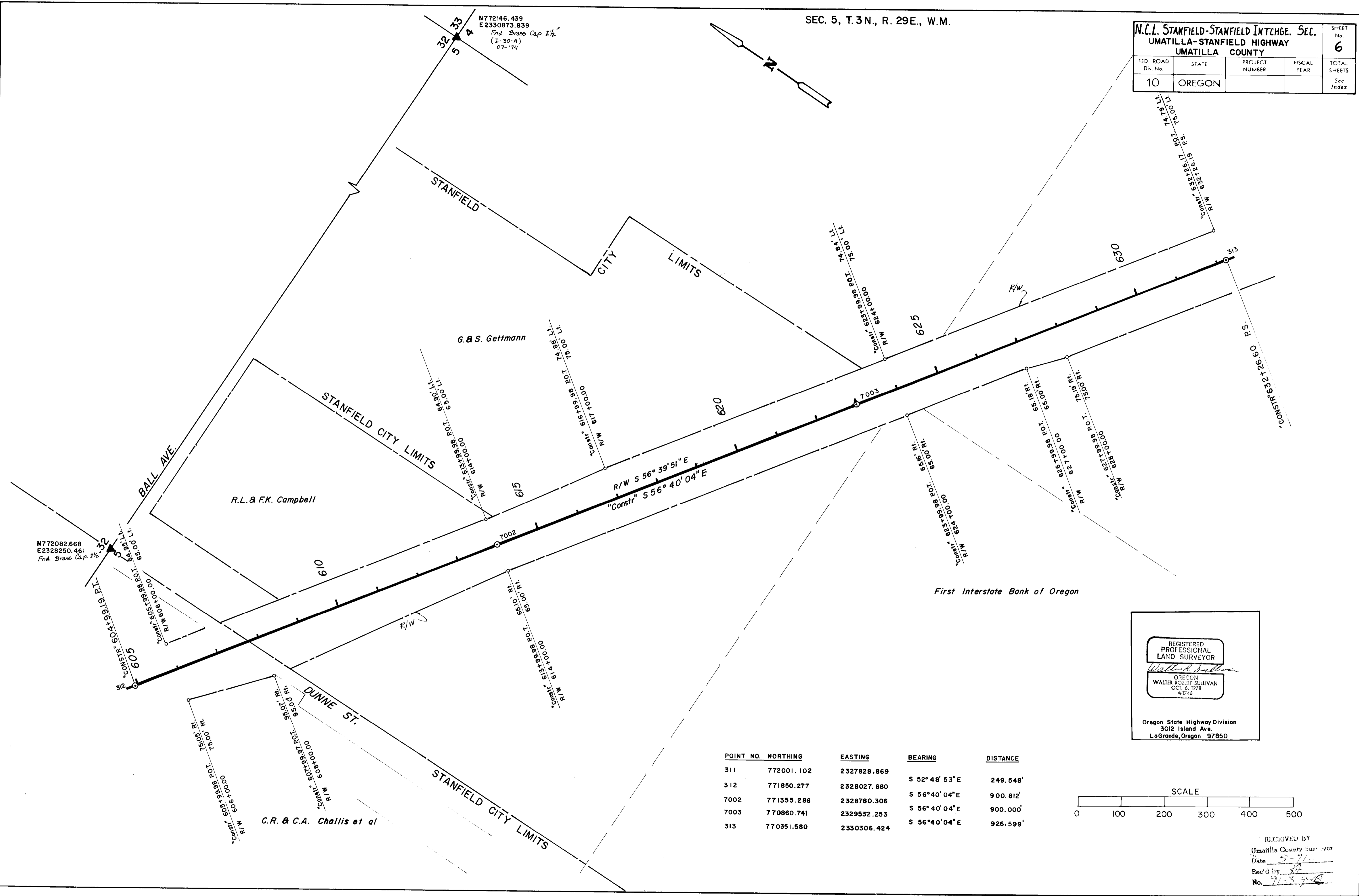
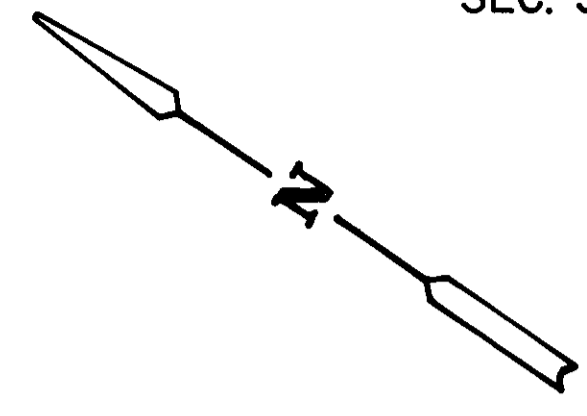
POINT NO.	NORTHING	EASTING	BEARING	DISTANCE
308	774014.675	2327608.601		
309	772551.357	2327639.916	S 01° 13' 33" E	1463.654'
310	772302.789	2327662.007	S 05° 04' 44" E	249.548'
311	772001.102	2327828.869	S 28° 56' 48" E	344.757'
312	771850.277	2328027.680	S 52° 48' 53" E	249.548'



RECEIVED BY
 Umatilla County Surveyor
 Date 5-91
 Rec'd by [Signature]
 No. 91-37-15

SEC. 5, T. 3 N., R. 29 E., W.M.

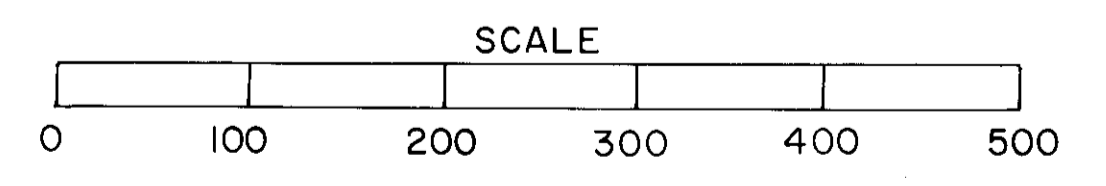
N.C.L. STANFIELD-STANFIELD INTCHGE. SEC.				SHEET No.
UMATILLA-STANFIELD HIGHWAY				6
UMATILLA COUNTY				
FED. ROAD Div. No.	STATE	PROJECT NUMBER	FISCAL YEAR	TOTAL SHEETS
10	OREGON			See Index



First Interstate Bank of Oregon

REGISTERED PROFESSIONAL LAND SURVEYOR
Walter Robert Sullivan
 OREGON
 WALTER ROBERT SULLIVAN
 OCT. 6, 1978
 #1745
 Oregon State Highway Division
 3012 Island Ave.
 LaGrande, Oregon 97850

POINT NO.	NORTHING	EASTING	BEARING	DISTANCE
311	772001.102	2327828.869		
312	771850.277	2328027.680	S 52° 48' 53" E	249.548'
7002	771355.286	2328780.306	S 56° 40' 04" E	900.812'
7003	770860.741	2329532.253	S 56° 40' 04" E	900.000'
313	770351.580	2330306.424	S 56° 40' 04" E	926.599'

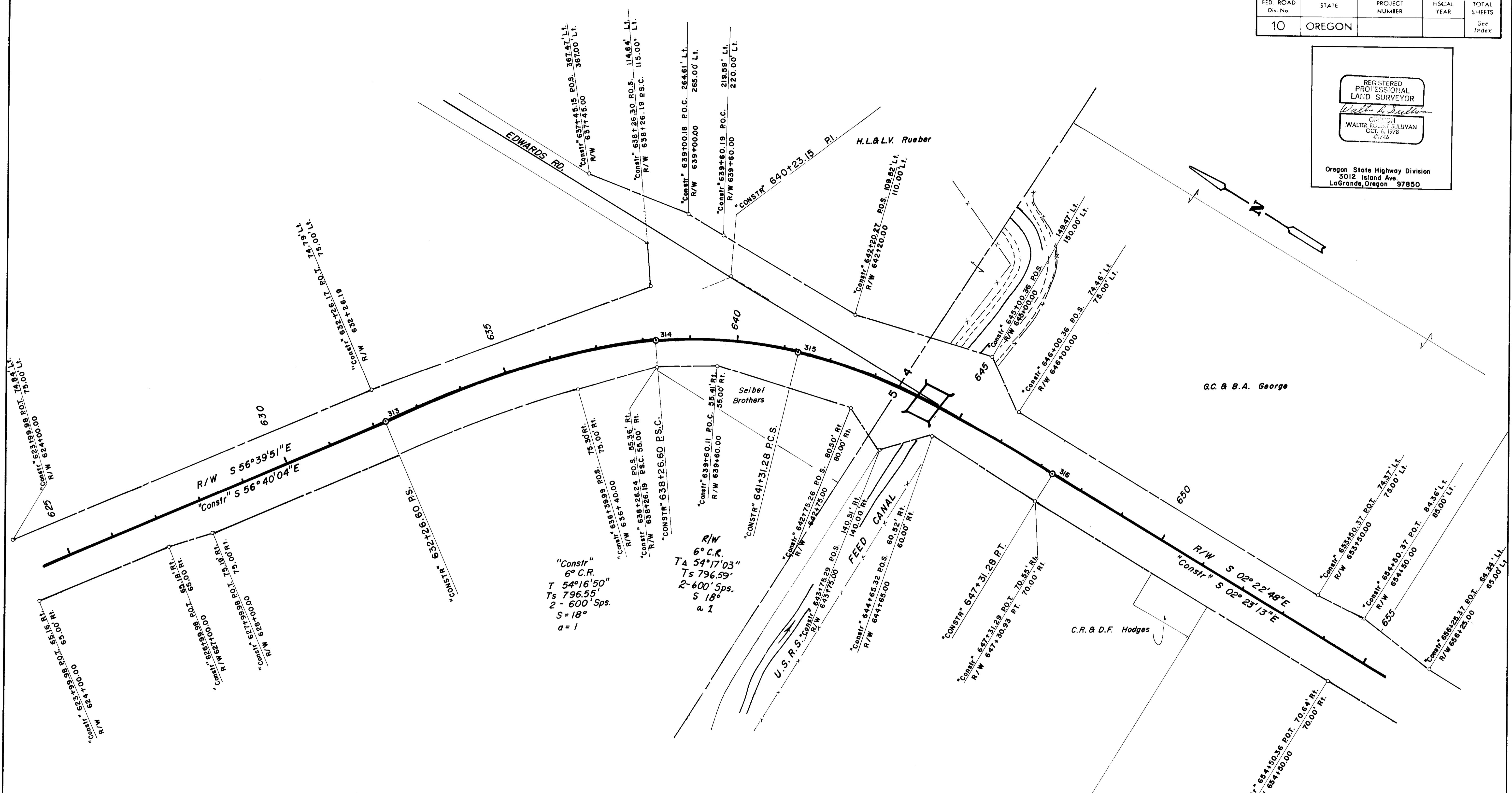


RECEIVED BY
 Umatilla County Surveyor
 Date 5-71
 Rec'd by [Signature]
 No. 91-39-6

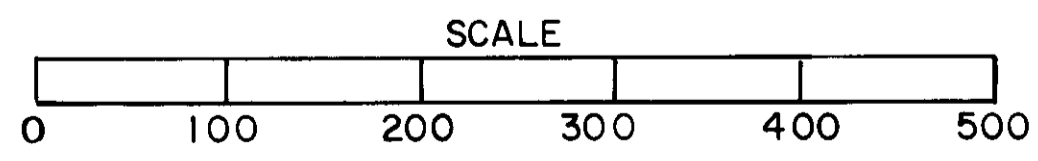
T. 3 N., R. 29 E., W.M.

N.C.L. STANFIELD-STANFIELD INTCHGE. SEC.					SHEET No.
UMATILLA-STANFIELD HWY.					7
UMATILLA COUNTY					
FED. ROAD Div. No.	STATE	PROJECT NUMBER	FISCAL YEAR	TOTAL SHEETS	
10	OREGON			See Index	

REGISTERED PROFESSIONAL LAND SURVEYOR
Walter K. Sullivan
 WALTER K. SULLIVAN
 OCT. 6, 1978
 8743
 Oregon State Highway Division
 3012 Island Ave.
 LaGrande, Oregon 97850



POINT NO.	NORTHING	EASTING	BEARING	DISTANCE
7003	770860.741	2329532.253	S 56°40' 04" E	926.599'
313	770351.580	2330306.424	S 50°40' 22" E	597.372'
314	769972.995	2330768.514	S 29°31' 38" E	303.387'
315	769709.012	2330918.035	S 08°22' 55" E	597.372'
316	769118.020	2331005.115		



R.L. & T.K. Holeman

RECEIVED BY
 Umatilla County Surveyor
 Date 5-91
 Rec'd by JK
 No. 97136R

T. 3 N., R. 29 E., W.M.

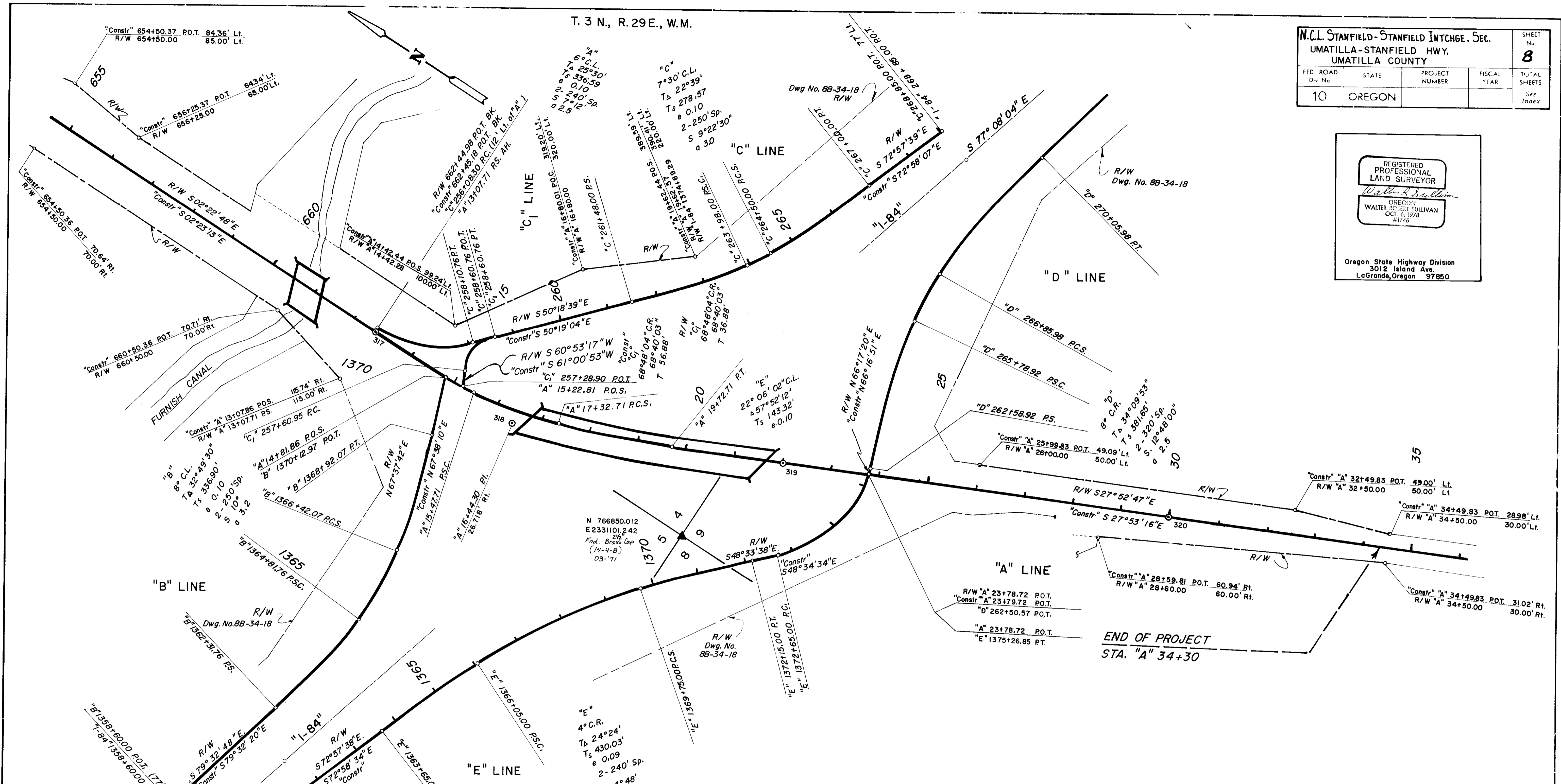
N.C.L. STANFIELD-STANFIELD INTCHGE. SEC.					SHEET No. 8
UMATILLA-STANFIELD HWY.					TOTAL SHEETS
UMATILLA COUNTY					See Index
FED. ROAD Div. No.	STATE	PROJECT NUMBER	FISCAL YEAR		
10	OREGON				

REGISTERED PROFESSIONAL LAND SURVEYOR

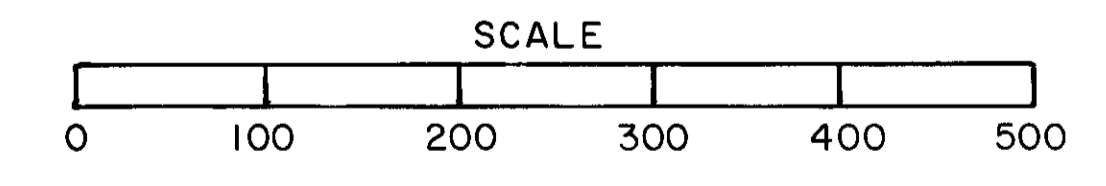
Walter R. Sullivan

OREGON
WALTER ROBERT SULLIVAN
OCT. 6, 1978
#1746

Oregon State Highway Division
3012 Island Ave.
LaGrande, Oregon 97850



POINT NO.	NORTHING	EASTING	BEARING	DISTANCE
316	769118.020	2331005.115		
317	767605.430	2331068.167	S 02° 23' 13" E	1513.903'
318	767269.131	2331082.185	S 02° 23' 13" E	336.591'
319	766770.749	2331345.930	S 27° 53' 16" E	563.867'
320	766063.657	2331720.124	S 27° 53' 16" E	800.000'



RECEIVED BY
Umatilla County Surveyor
Date: _____
Rec'd by: _____
No. _____