

Survey For  
**OREGON DEPT. OF TRANSPORTATION  
HIGHWAY DIVISION**

Sheet No.  
**1**

Pendleton - Cold Springs Hwy #36

Umatilla County

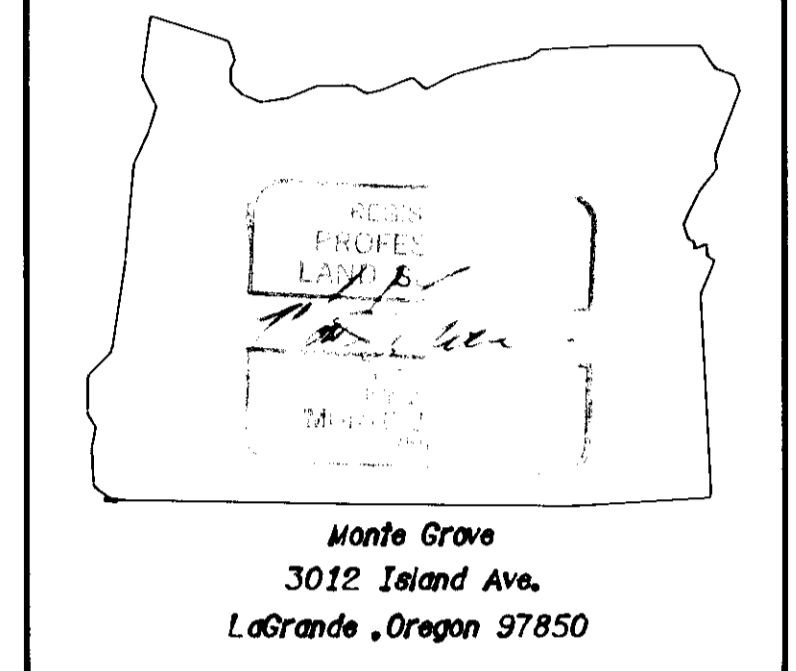
**S. FK. COLD SPR. BR. #4739  
(GRANGE HALL)**

Total Sheets  
**1**

Key I.D. No. 05254  
Date of Survey : Jan. 22, 1992

Legend

- X Set Monument
- ⊙ Found Monument
- SCALE ~ 1"=600'



NARRATIVE OF SURVEY

The purpose of this survey is to establish horizontal control for the replacement of the S. Fk. Cold Spr. (Grange Hall) Br. #4739, located at M.P. 23.10 on the Pendleton-Cold Springs Hwy. The survey is located in Sec. 32, 33 & 34 T4S/R32E W.M. and Sec. 3, 4, 8, 9 & 10 T3S/R32E W.M. Umatilla County, OR.

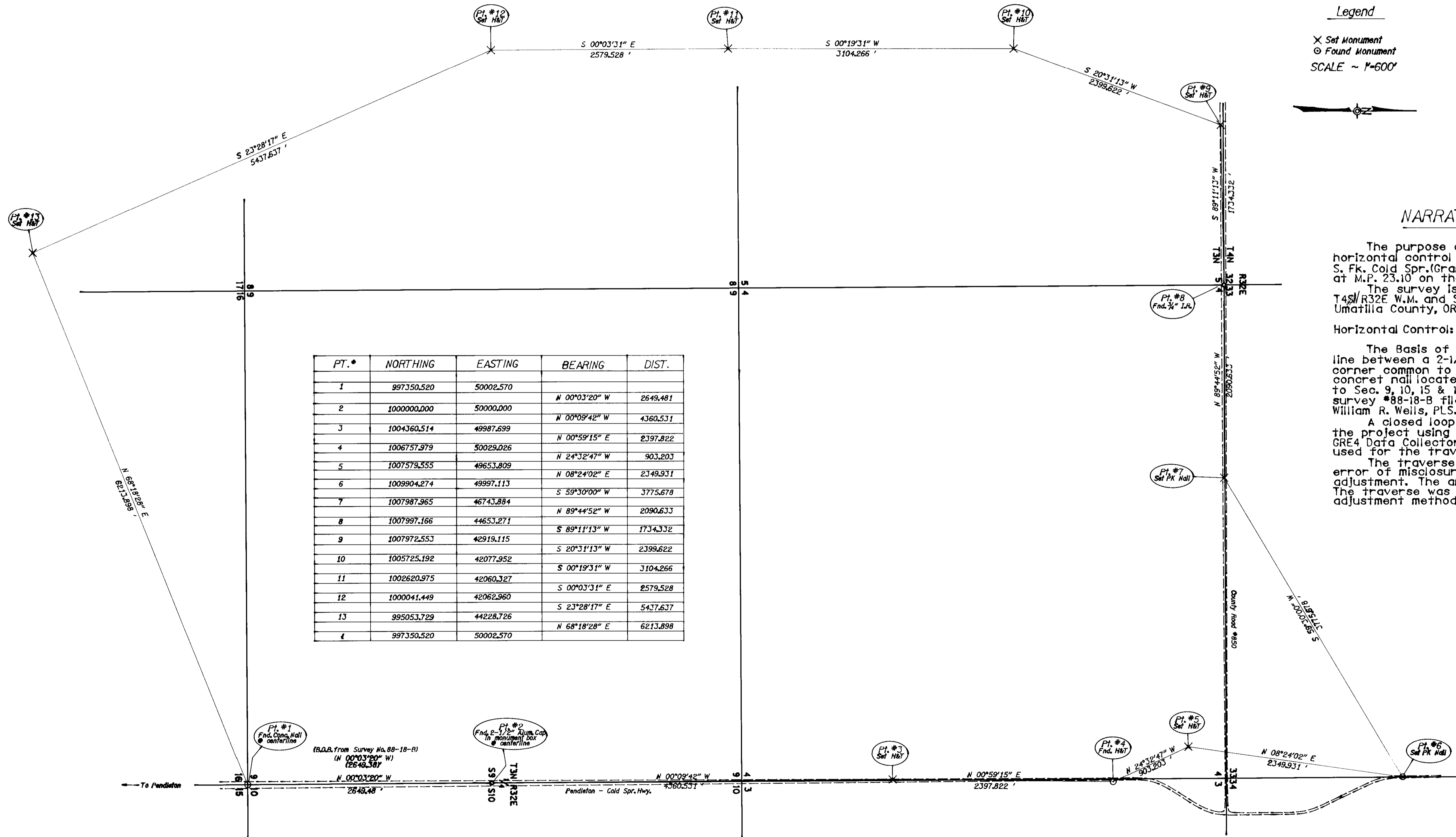
Horizontal Controls:

The Basis of Bearing for the survey is the line between a 2-1/2" Alum. Cap located at the 1/4 corner common to Sec. 9 & 10 T3S/R32E and a concrete nail located at the section corner common to Sec. 9, 10, 15 & 16 T3S/R32E as established in survey #88-18-B filed in Umatilla County by William R. Wells, PLS.

A closed loop traverse was ran for the project using a Wild T1600 Theodolite and a GRE4 Data Collector. Assumed coordinates were used for the traverse.

The traverse included 13 points with a linear error of misclosure of 1:87,689 before angular adjustment. The angular misclosure was 5 seconds. The traverse was balanced using the compass rule adjustment method.

PT. #	NORTHING	EASTING	BEARING	DIST.
1	997350.520	50002.570		
2	1000000.000	50000.000	N 00°03'20" W	2649.481
3	1004360.514	49987.699	N 00°09'42" W	4360.531
4	1006757.979	50025.026	N 00°59'15" E	2397.822
5	1007579.555	49653.809	N 2°32'47" W	903.203
6	1009904.274	49997.113	N 08°24'02" E	2349.931
7	1007987.965	46743.884	S 59°30'00" W	3775.678
8	1007997.166	44653.271	N 89°44'52" W	2090.633
9	1007972.553	42919.115	S 89°11'13" W	1734.332
10	1005725.192	42077.952	S 20°31'13" W	2399.622
11	1002620.975	42060.327	S 00°19'31" W	3104.266
12	1000041.449	42062.960	S 00°03'31" E	2579.528
13	995053.729	44228.726	S 23°28'17" E	5437.637
1	997350.520	50002.570	N 68°18'28" E	6213.898



# Oregon

93 NOV 19 A 11:13

REEL 244 PAGE 734

188205

DEPARTMENT OF  
TRANSPORTATION

November 16, 1993

Region 5

Umatilla County Clerk  
216 S.E. Fourth Street  
Pendleton, OR 97801

*Return to*  
Oregon DEPARTMENT OF  
TRANSPORTATION  
3012 Island Avenue  
La Grande Oregon 97850

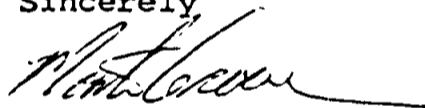
Please send recorded copy to County Surveyor.

Affidavit of correction to amendment South Fork Cold Springs Bridge #4739 (Grange Hall) Survey Plat.

In accordance with ORS 209.255 this affidavit is to correct an error contained in the Narrative Of Survey. The original plat makes reference to T3S and T4S. This should be corrected to say T3N and T4N.

Thank you for your assistance with this correction.

Sincerely



Monte Grove, PE, PLS  
Oregon Department Of Transportation  
Region 5  
3012 Island Ave.  
La Grande, OR 97850

REGISTERED  
PROFESSIONAL  
LAND SURVEYOR  
*Monte Grove*  
OREGON  
JULY 21, 1992  
MONTE J. GROVE  
2554

MB/ps

STATE OF OREGON, COUNTY OF UMATILLA  
I THOMAS L. GROAT, COUNTY CLERK, CERTIFY THIS  
INSTRUMENT WAS RECEIVED AND RECORDED ON 11-19-93  
AT 11:13 IN THE RECORD OF DOCUMENT CODE TYPE  
DE-AFF  
LOCATION R244-0734  
DOCUMENT NUMBER 93-188205  
FEE 5.00

THOMAS L. GROAT  
UMATILLA COUNTY CLERK

RECEIVED BY *[Signature]* DEPUTY



3012 Island Ave.  
La Grande, OR 97850  
(503) 963-3177  
FAX (503) 963-9079