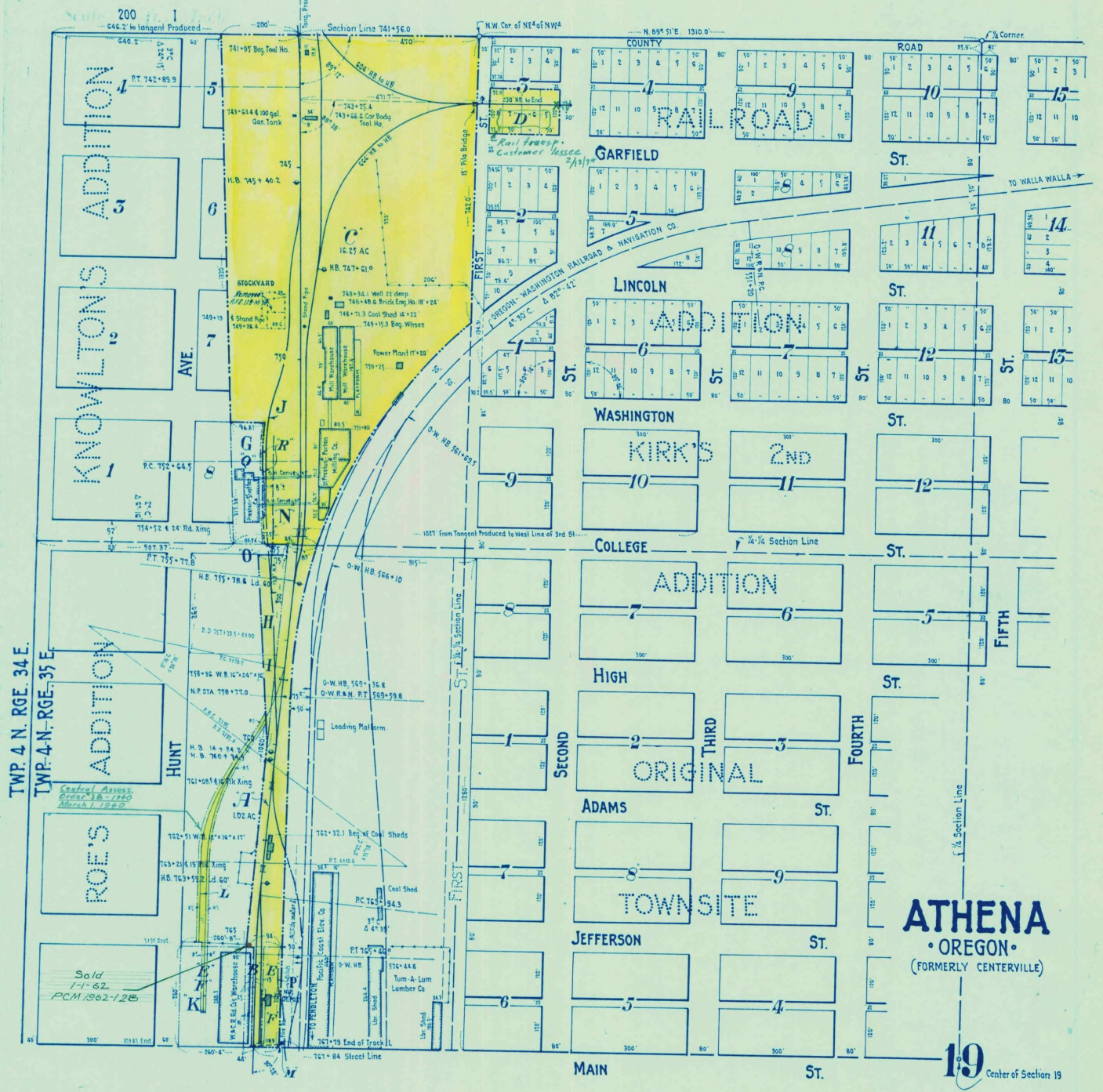


Athena Branch
Oregon
4 North
35 East
Umatilla
Willamette
NOV 1 1960



A	2	William Williaby & wf	C. B. Wright	War. Deed	1.02	June 1, 1892	June 2, 1892, Bk. 9 Deeds, P. 34.	R/W in SW 1/4 of NW 1/4 of Section 19.		
B	3	Farmers Warehouse Co.	do.	R/W Deed.		June 1, 1892	June 2, 1892, Bk. 6 Deeds, P. 384.	44' strip across tract bounded by O.W.R.&N.Co.'s W; Main St; Hunt Ave. and a line 260' north of N. Line of Main St.	4382	
C	22	Frank M. Knowlton & wf.	O-W.T.R.R. Co.	War. Deed	16.25	Aug. 17, 1888.	Aug. 20, 1888, Bk. U, Deeds, P. 28.	Tract of Land in NW 1/4 of NW 1/4 of Section 19.		
D	27	J.R. King & wf.	W & C.R. Ry. Co.	do.		Sept. 6, 1899	Sept. 13, 1899, Bk. 30 Deeds, P. 573	Lots 5, 6, 7, 8, Bk. 3, Railroad Add.		
E	30	Jonathan N.B. Gerking & wf.	do.	do.		Aug. 4, 1894	Aug. 9, 1894, Bk. 14 Deeds, P. 176	Tract of land 260' long in SW 1/4 of NW 1/4 of Sec. 19, excepting 44' strip acquired under Deed No. 3.		
F	31	Correspondence covering property of the Farmers Warehouse Co, acquired by Deed No. 30.								
G	37	N.P. Ry. Co.	Peacock Mill Co.	War. Deed	0.54	Sept. 15, 1932.		Portion of station grounds in Lot 1.	20, 227 96/32.	
H	38	Alvin Johnson	N.P. Ry. Co.	do.	0.43	July 7, 1932.	July 9, 1932, Bk. 130 Deeds, P. 417.	Add'l. tract of land in SW 1/4 NW 1/4	20, 227 106/32.	
I	38 A	A.H. Kibbey and Cecil Kibbey	do.	do.		Jan. 10, 1933.	Jan. 31, 1933, Bk. 144 Deeds, P. 14.	That portion of triangular tract in SW 1/4 NW 1/4 lying S. of line 260' S. of College St.	20, 227	
J	39	N.P. Ry. Co.	O-W. R. & N. Co.	Contract		Mar. 10, 1933.		Covering joint use of N.P. track.	20, 227	
K	40	do.	P.J. Burke Canning Co.	War. Deed		May 9, 1935.		Tract 260' long of Hunt Ave. and Main St, lying W 1/4 of line 10' W of E of main track.	20, 532 40/35	
L	42	Rogers Canning Co.	N.P. Ry. Co.	Easement		Sept. 6, 1940	Sept. 23, 1940, Vol. 160 Deeds, P. 101	in 1/4 W of spur trks. lying nly of N.P. W. stry of High St. and nly of Main St.	do.	
M	43	O.W.R. & N. Co.	do.	Permit		July 17, 1941		14' Reinforced Concrete Pipe extending onto small portion of o.w. prop. just nly of Main St.	do. 102/40 do. 120/41	