


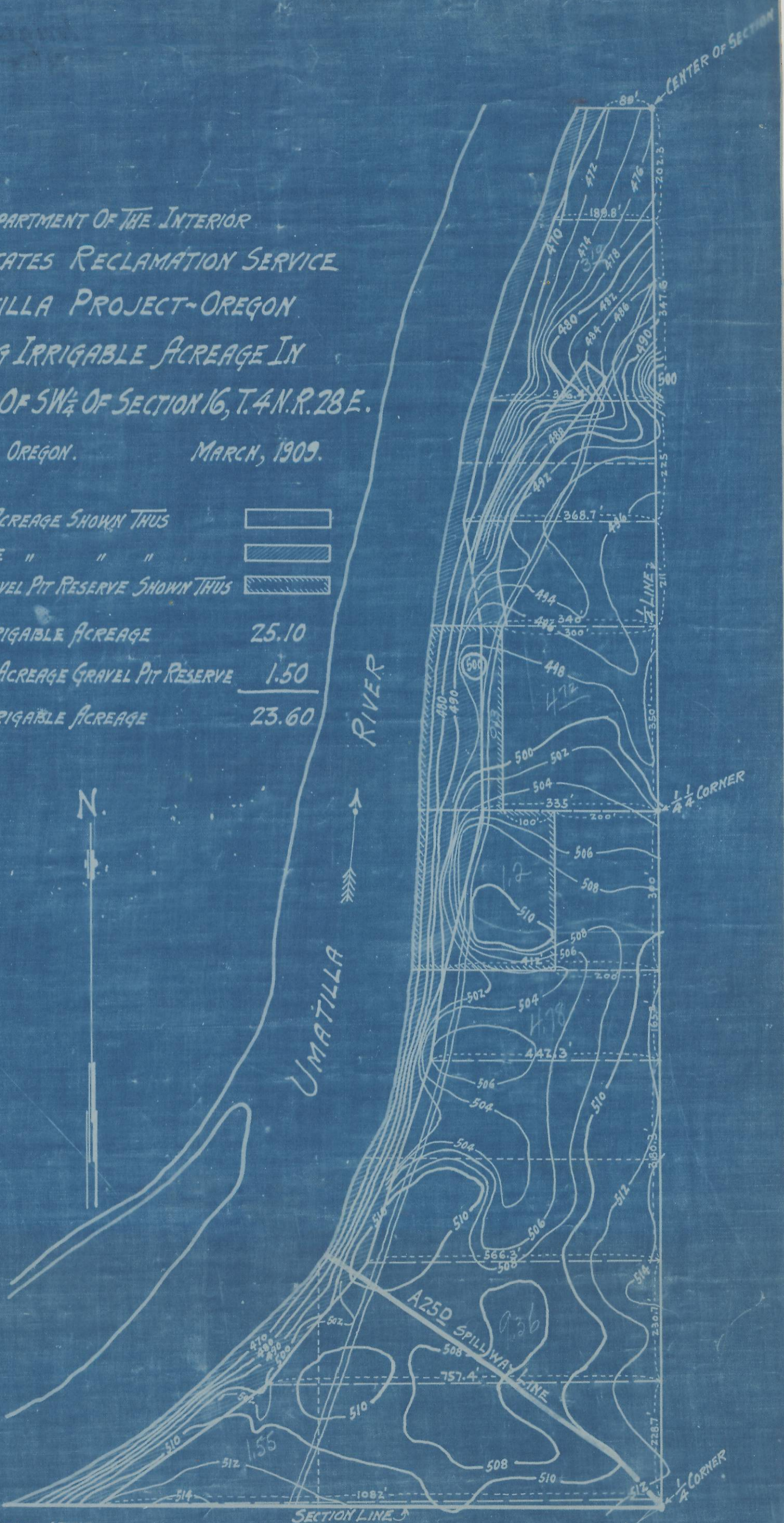


DEPARTMENT OF THE INTERIOR
 UNITED STATES RECLAMATION SERVICE
 UMATILLA PROJECT-OREGON
 PLAT SHOWING IRRIGABLE ACREAGE IN
 E 1/2 OF SW 1/4 OF SECTION 16, T.4N.R.28E.

HERMISTON, OREGON. MARCH, 1909.

IRRIGABLE ACREAGE SHOWN THUS	
NON IRRIGABLE " " "	
MAXWELL GRAVEL PIT RESERVE SHOWN THUS	
TOTAL IRRIGABLE ACREAGE	25.10
IRRIGABLE ACREAGE GRAVEL PIT RESERVE	1.50
NET IRRIGABLE ACREAGE	23.60



UMATILLA NUMBER 1321.
 BOX NUMBER 12.